



PORTUGAL



LISBON

Iberostar Lisboa



PORTUGAL · LISBON



LOCATED IN THE COMMERCIAL CENTRE OF THE CITY

NEW 5-STAR URBAN HOTEL

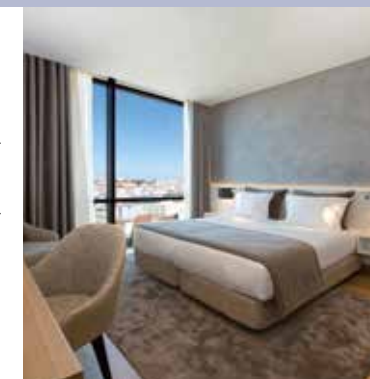
INDOOR AND OUTDOOR POOLS

WELLNESS CENTRE & SPA WITH MASSAGES AND TREATMENTS

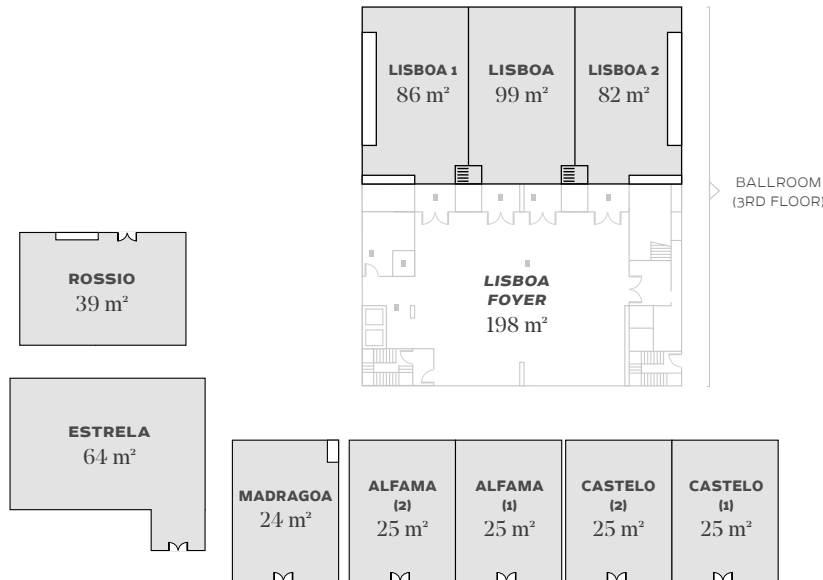
SEVEN MULTI-USE ROOMS FOR MEETINGS AND EVENTS



LOCATION	In the commercial and business area of Lisbon Just 350 m from the Praça Marquês de Pombal 750 m from Eduardo VII Park 15 minutes from Lisbon airport
ACCOMMODATION	With 166 rooms including doubles, junior suites, suites and royal suites
FACILITIES AND SERVICES	Outdoor pool Indoor pool with goose neck fountains and upright water massages Sun terrace Private parking Free Wi-Fi International newspapers daily Wellness Centre & Spa Fitness centre Hairdresser Lounge bar and exclusive terrace with pool access Seven multi-use rooms + Ballroom (400 m ²)
CUISINE	Buffet restaurant for breakfast with local and international cuisine À la carte restaurant with local and international cuisine Lobby Bar Pool bar 24-hour room service
ENTERTAINMENT	Guided tours of the city Taxi service and transfers



Tel.: +34 971 99 80 60
Email: callcenter@iberostar.com



ROOMS	ESTRELA	ROSSIO	LISBOA (1) - (LISBOA) - (2)	LISBOA FOYER	MADRAGOA	ALFAMA (1) - (2)	CASTELO (1) - (2)	
AREA (m²)	64	39	86 - 99 - 82 / 266	198	24	25 - 25 / 50	25 - 25 / 50	
DIMENSIONS (m)	8	6	13 - 12 - 12 / 38		6	6 - 6 / 12	6 - 6 / 12	
WIDTH (m)	8	6	7 - 8 - 7 / 21		4	4 - 4 / 8	4 - 4 / 8	
HEIGHT (m)	2.5	2.5	5	-	2.5	2.5	2.5	
COLUMN	NO	NO	NO	-	NO	NO	NO	
NATURAL LIGHT	NO	YES	YES	YES	NO	YES	YES	
FLOOR	Carpet	Carpet	Parquet	Tiled floor	Carpet	Carpet	Carpet	
CAPACITY (PAX)	THEATER	56	76 - 86 - 76 / 232	-	22	22 - 22 / 44	22 - 22 / 44	
	CLASSROOM	46	60 - 70 - 60 / 190	-	18	18 - 18 / 36	18 - 18 / 36	
	U-SHAPE	27	24 - 24 - 24	-	8	8 - 8 / 24	8 - 8 / 16	
	COCKTAIL	60	40	70 - 80 - 70 / 250	160	25	25 - 25 / 50	25 - 25 / 50
	BANQUET	-	-	50 - 60 - 50 / 160	-	-	40	40
	BOARDROOM	24	24	34 - 38 - 34	-	10	10 - 10 / 20	10 - 10 / 20

Rooms' main structures
 Additional areas (Foyer Lisboa)
 Conference area or zone (in m²)
 Columns or pillars

8 CONFERENCE ROOMS (PLUS THE FOYER) WITH A TOTAL CAPACITY OF 700 M²

SPACIOUS AND COMFORTABLE HALL AREA, IDEAL FOR SMALL MEETINGS OR INTERVIEWS

ADAPTABLE, MULTI-FUNCTIONAL BALLROOM TO HOLD THE BEST EVENTS

TERRACE WITH GARDEN AREA, PERFECT FOR OPEN-AIR BANQUETS AND COCKTAIL RECEPTIONS

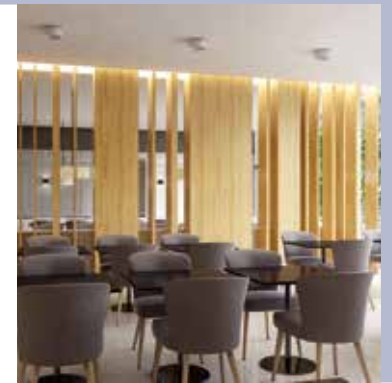
ELEGANT LOBBY AND BAR AREA TO RELAX IN BETWEEN ACTIVITIES

MICE FACILITIES 8 conference rooms measuring a total of 700 m² with capacity for up to 250 people
State-of-the-art audiovisual equipment and free Wi-Fi & Walk
Multi-functional ballroom measuring 400 m²: rooms can be adapted into 3 areas or remain as 1 large multi-functional room. 200 m² foyer for welcome cocktails. Cloakroom service

MICE ACTIVITIES Team building activities (at the hotel): workshops, etc.
Organisation of social events: weddings, banquets, etc.
Organisation of business events: congresses, trade fairs, conferences, etc.

MICE SERVICES Coffee breaks, working lunches, cocktail receptions, gala dinners and themed parties, etc.
Personalised attention and 24-hour reception

PLACES OF INTEREST 11.5 km from Altice Arena (Pavilhão Atlântico), a covered, multi-functional stadium in Nações Park, with capacity for 16,000 people
11 km from FIL (Lisbon Exhibition and Congress Centre) with capacity for 20,000 people
6.5 km from CCL (Lisbon Congress Centre) with capacity for 2,500 people



Tel.: +34 971 99 80 60
Email: estel.morales@iberostar.com